



PILBARA COMMUNITY LEGAL SERVICE Inc.

What a month October has been. We've been busy getting out and about in the community and taking part in local events. It's great to be involved with such amazing communities who support their locals. This month we also celebrated Mental Health Week, held our monthly Community Migrant events and had a few outreach trips. Have a read below to see what we've been up to and what we have planned for November,

What's Been Happening at PCLS



MENTAL HEALTH WEEK 2022

In celebration of Mental Health Week 2022 we held a Big Blue BBQ in South Hedland. Lots of local organisations joined us and supported the event. A special shoutout to Town of Port Hedland, Hedland Well Women's Centre, Gateway Village, Mission Australia, headspace Pilbara and Population Health. We loved chatting with the local community and celebrating the importance of mental health.

HEALTHY AUSSIE COOKING

In October our Healthy Aussie Cooking session ran again in Karratha. This month we cooked up spooky Halloween treats and played bingo with lots of fun prizes. Thank you to everyone that came along and joined us.



COOKING UP A STORM

Our monthly cooking up a storm session in South Hedland was a great success. In October we cooked up delicious Iranian food. Thank you to Hedland Well Women's Centre for supporting this event and all of the community members who came along.

GUMALA ABORIGINAL CORPORATION CELEBRATION

Earlier in October Gumala Aboriginal Corporation celebrated 25 years since the signing of the Yandi Land Use Agreement with Rio Tinto Iron Ore. They held a family friendly community event with fireworks, kids rides, food and live entertainment for the town to enjoy. It was great to be invited to join and see the community come together to celebrate such a big milestone.

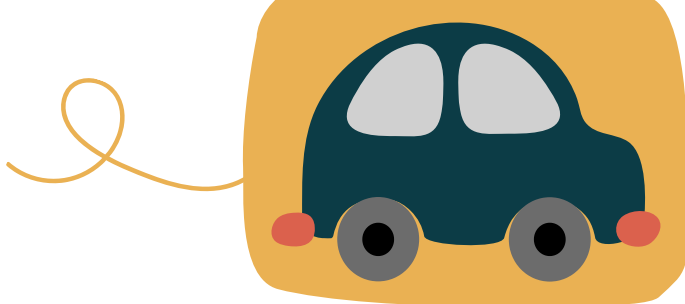


YAANDINA OPEN DAY

Earlier this month our staff attended the Yaandina Open Day at the Turner River Rehabilitation Centre. It was great to meet with the staff and get a better understanding of how the programs operate and the facilities available to those attending.

NEWMAN OUTREACH

In October our Legal Team have made several trips to Newman to meet with local service providers and community members. It's great to be growing our presence in the community and increasing the support we can provide to locals.



Coming Up at PCLS



Our Financial Counselling, Redress Support and Disability Advocacy Teams will be travelling to Onslow on November 3rd. Contact us on 9185 5899 to book an appointment with them.



Our monthly cooking up a storm session in South Hedland is running again on Friday 18 November from 10am at Hedland Well Women's Centre.



Join us on Monday 14 November at Karratha Women's Place from 11am - 1pm for our Healthy Aussie Cooking session.

Our Services



HOUSING SUPPORT

Our Housing Difficulty Workers assist people who are having difficulty sustaining stable accommodation. The program is for people who are at risk of or are experiencing any type of homelessness issues.



COMMUNITY MIGRANT SERVICES

Our Community Migrant Service Workers provide one-on-one casework, support, information and connection to other mainstream services to assist migrants.



LEGAL SUPPORT

Our Legal Team offer free legal advice and assistance in the areas of family law, restraining orders, protection and care, licence disqualifications and extraordinary licences and criminal injuries compensation.



REDRESS SUPPORT

Our Redress Support Workers are here to help survivors of institutionalised sexual abuse understand the scheme, receive emotional support and guide them through the application process.



DOMESTIC VIOLENCE SUPPORT

The role of our Domestic Violence Support Workers is to provide support to victims of family and domestic violence through safety and crisis intervention planning, informal counselling, support planning, advocacy, court support, assistance with violence restraining order applications and education.



TENANT ADVICE & EDUCATION SERVICE

Our Tenant Advice and Education Service Workers are here to support and educate tenants in relation to their rights and responsibilities in accordance with the Residential Tenancies Act. We are unable to assist landlords or commercial tenants.



FINANCIAL COUNSELLING

Our Financial Counsellors offer information, conduct assessments and provide options and support to assist clients, address identified problems and manage financial situations more effectively.



DISABILITY ADVOCACY

Our Disability Advocacy Service is committed to improving the lives and opportunities for people living with disability.



Contact Us Today!

Karratha Phone: (08) 9185 5899	Roebourne Phone: (08) 9185 5899	South Hedland Phone (08) 9140 1613	Newman Phone: (08) 9140 1613
--	---	--	--