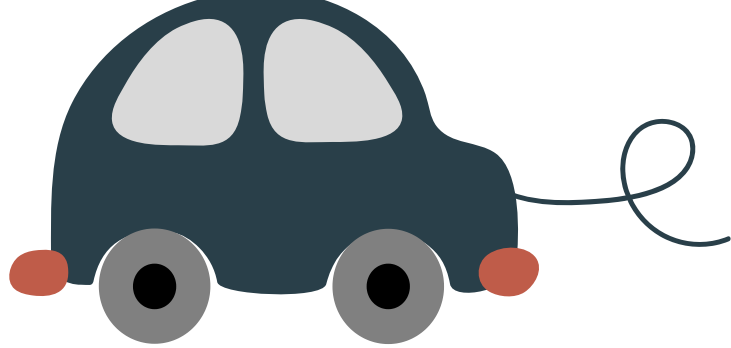




PILBARA COMMUNITY LEGAL SERVICE Inc.

What a month July has been! Our team has been hitting the road and travelling the Pilbara region, cooking food with the community, taking part in NAIDOC week events and much more. We're also really excited about what's to come over the next few months. Make sure you keep reading to find out more about what we've been up to and what we've got coming up.

What's Been Happening at PCLS



TOM PRICE AND NEWMAN COMMUNITY VISITS

In July our Legal Team and Domestic Violence Advocacy and Support Teams travelled out to Newman and Tom Price. During their visits they met with clients and local organisations. We're looking forward to our next visit - keep an eye out for more details!

ONLSOW AND ROEBOURNE ABORIGINAL JUSTICE OPEN DAY

Our Legal, Financial Counselling and Disability Advocacy Teams all recently travelled to Onslow to take part in the Aboriginal Justice Open Day. It was a great opportunity to meet community members and share more about what our services can help with, and to meet other organisations. We're looking forward to taking part in the next Aboriginal Justice Open Day in the region.



COOKING UP A STORM

This month's Cooking Up A Storm session run by our Community Migrant Services Team in South Hedland focused on cooking up a delicious meal with ingredients fresh from the garden. Robyn Todd from Care for Hedland Community Garden joined the group to teach them all about using fresh produce.

NAIDOC WEEK

At the start of the month our South Hedland, Roebourne and Karratha offices all held community BBQs for NAIDOC Week. A special thank you to Ngarluma Aboriginal Corporation, Kevin Michel MLA, The Salvation Army Australia and Westpac in Karratha, Val and Kathy's Crafty Kitchen and Roebourne Men's Group in Roebourne, and Child Australia in South Hedland for helping us make these events possible.



Coming Up at PCLS



On August 22 and 23 our Legal Team will be travelling to Marble Bar for the Aboriginal Justice Open Day. Keep an eye out on Facebook for more details so you can stop by and chat to our friendly team.



From Monday July 15 to Friday July 19 there will be a wills clinic operating in the Pilbara region. They'll be making stops at South Hedland, Roebourne and Karratha. Keep an eye out for more details. We'll also be running free information sessions about wills in Karratha at Lotteries House on Monday 8 August and Tuesday 9 August from 1pm - 2pm and in Roebourne at 50 Cent Hall on Wednesday 10 August from 1pm - 2pm.



Our next Cooking up a Storm session will be running on Friday 19 August from 10am to 12pm at Hedland Well Women's Centre. Be sure to join us so you don't miss out on the delicious food.



Homelessness Week runs from 1 to 7 August this year. On Tuesday 2 August we'll be hosting a community BBQ in Roebourne from 11:30am at Ganalili BBQ Area. Be sure to stop by and see us!



Don't forget about the household electricity credit funded by the Western Australian Government. You can get more information about it at: <https://www.wa.gov.au/government/publications/apply-the-household-electricity-credit>

Our Services

HOUSING SUPPORT



Our Housing Support Workers assist people who are having difficulty sustaining stable accommodation. The program is for people who are at risk of or are experiencing any type of homelessness issues.

COMMUNITY MIGRANT SERVICES



Our Community Migrant Service Workers provide one-on-one casework, support, information and connection to other mainstream services to assist migrants.

LEGAL SUPPORT



Our Legal Team offer free legal advice and assistance in the areas of family law, restraining orders, protection and care, licence disqualifications and extraordinary licences and criminal injuries compensation.

REDRESS SUPPORT



Our Redress Support Workers are here to help survivors of sexual abuse understand the scheme, receive emotional support and guide them through the application process.

DOMESTIC VIOLENCE SUPPORT



The role of our Domestic Violence Support Workers is to provide support to victims of family and domestic violence through safety and crisis intervention planning, informal counselling, support planning, advocacy, court support, assistance with violence restraining order applications and education.

TENANT ADVICE & EDUCATION SERVICE



Our Tenant Advice and Education Service Workers are here to support educate tenants in relation to their rights and responsibilities in accordance with the Residential Tenancies Act. We are unable to assist landlords or commercial tenants.

FINANCIAL COUNSELLING



Our Financial Counsellors offer information, conduct assessments and provide options and support to assist clients, address identified problems and manage financial situations more effectively.

DISABILITY ADVOCACY



Our Disability Advocacy Service is committed to improving the lives and opportunities for people living with disability.

Contact Us Today!

Karratha	Roebourne	South Hedland	Newman
Phone: (08) 9185 5899	Phone: (08) 9185 5899	Phone (08) 9140 1613	Phone: (08) 9140 1613